



The Research Institute of General Pathology is organized to improve the efficiency of scientific research and to focus on scientific platforms approved by the Ministry of Health of the Russian Federation.

The research institute includes three laboratories: general pathophysiology, microbiology and magnetobiology, and the laboratory of cardiac pathophysiology, which are good equipped to: study the mechanisms of disease development from the perspective of the systemic organization of body functions, dysregulation pathology and development of effective ways of their treatment; study the mechanisms of development of stress-induced pathology and the possibility of their correction by affecting the regulatory systems; study the neurotropic effects of regulatory peptides, biologically active substances and drugs; research the influence of environmental factors of the Kursk Magnetic Anomaly on the state of reactivity and resistance.

## GENERAL PATHOLOGY DEPARTMENT KURSK STATE MEDICAL UNIVERSITY

WE INVITE SCIENTIFIC TEAMS  
AND REPRESENTATIVES OF THE  
MEDICAL COMMUNITY  
FOR COOPERATION!

**BOBYNTSEV**  
IGOR IVANOVICH



Director of the Research Institute  
of General Pathology,  
Doctor of Medical Sciences,  
professor

Phone: +7 (910) 316-49-09

E-mail: [bobyntsevii@kursksmu.ne](mailto:bobyntsevii@kursksmu.ne)



3 K. Marx Street, Kursk, 305041, Russia



КУРСКИЙ ГОСУДАРСТВЕННЫЙ  
МЕДИЦИНСКИЙ УНИВЕРСИТЕТ  
KURSK STATE MEDICAL UNIVERSITY



# RESEARCH INSTITUTE OF GENERAL PATHOLOGY

[kurskmed.com](http://kurskmed.com)

**Research Institute of General Pathology is a structural subdivision of KSMU, the tasks of which include:**

- realization of joint scientific research in cooperation with leading academic and branch scientific teams

- research with foreign partners, development and integration with departments and scientific subdivisions of the University.

The structure of Research Institute OP includes laboratories of general pathophysiology, cardiac pathophysiology, microbiology and magnetobiology.

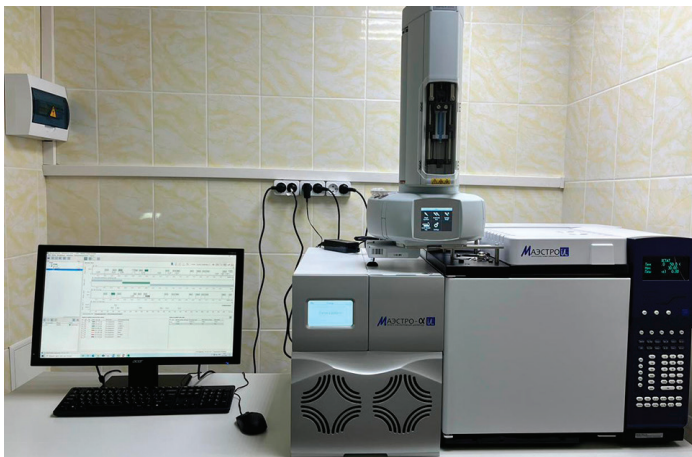
#### **Areas of research and development activities of the Research Institute of OD:**

1. The study of mechanisms of disease development from the standpoint of system organization of organism functions, dysregulation pathology and development of effective ways of their correction.

2. Study of the mechanisms of development of stress-induced pathology and the possibility of their correction by influencing the regulatory systems.

3. Study of neurotropic and cardiotropic effects of regulatory peptides, biologically active substances and drugs.

4. Study of possibilities of correction of dysbiosis of various etiologies.



## LABORATORY OF GENERAL PATHOPHYSIOLOGY

### **Areas of research:**

- research of mechanisms of disease development from the standpoint of systemic organization of functions of organism functions, dysregulation pathology and development of effective ways of their treatment;

- study of mechanisms of development of stress-induced pathology and possibility of their correction by influence on regulatory systems;

- research of neurotropic effects of regulatory peptides, biologically active substances and drugs.



## LABORATORY OF MICROBIOLOGY AND MAGNETOBIOLOGY

### **Research areas:**

- Microbiological support of the research performed by the units of KSMU;

- Determination of biocidal activity of newly synthesized preparations;

- Determination of microbiota composition of biotopes of different localization;

- Study of stress influence on microbiocenosis composition and development of ways to correct its disorders with the help of regulatory peptides.

## LABORATORY OF CARDIAC PATHOPHYSIOLOGY

### **Areas of research:**

- Research of cardiotropic effects of regulatory peptides, biologically active substances and drugs;

- Study of pathogenetic interrelationships cardiac activity with the state of regulatory systems under stress.

